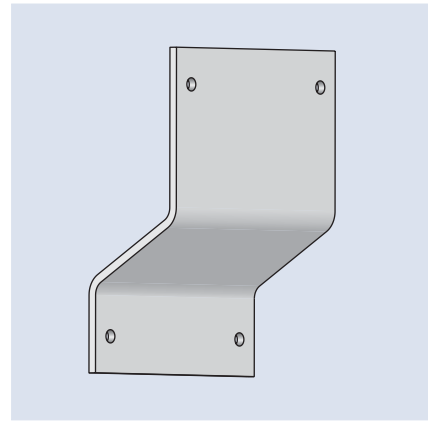
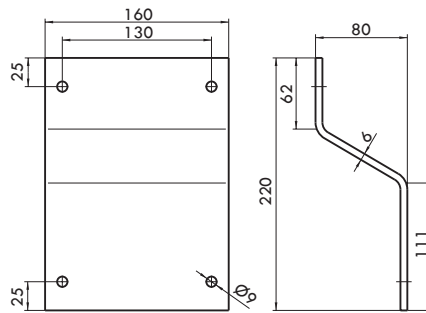


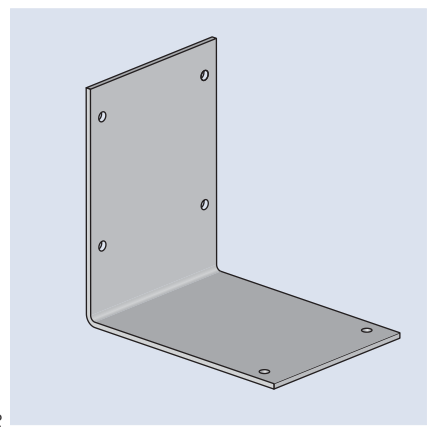
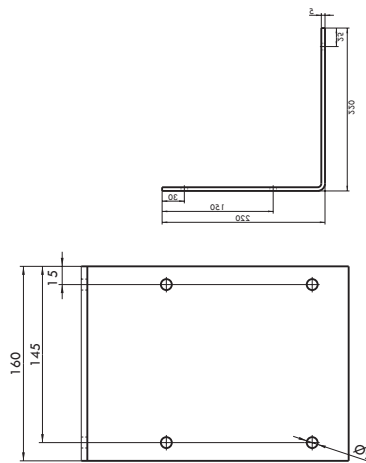
### Bevestigingsplaat gebogen EP-1

Artikel Nr	Materiaal
0800500100	Geel verzinkt staal



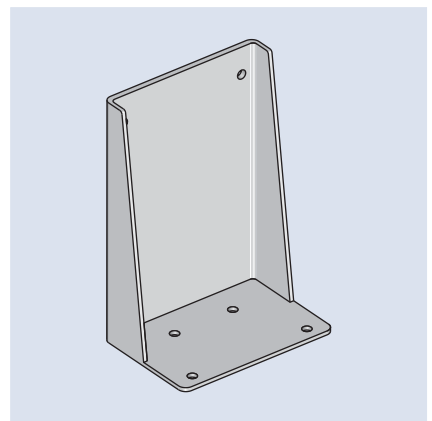
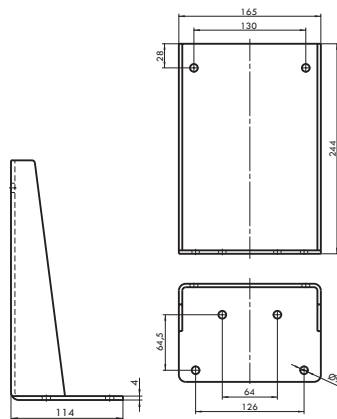
### Bevestigingsplaat in L-vorm EP-1

Artikel Nr	Materiaal
0800500101	Geel verzinkt staal



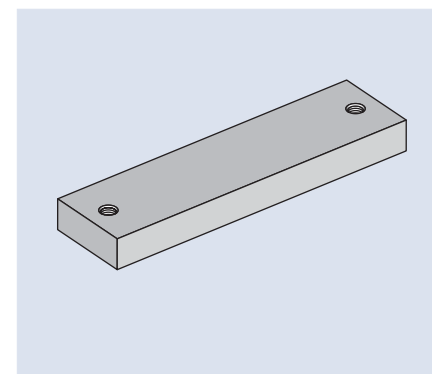
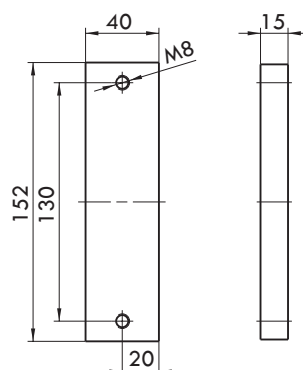
### Console EP-1

Artikel Nr	Materiaal
0800800445	Geel verzinkt staal



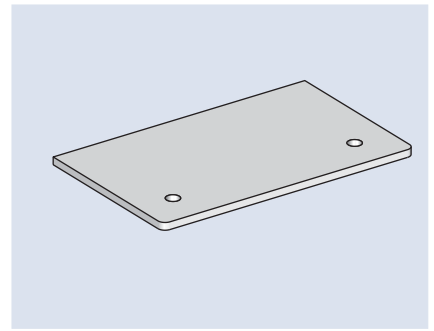
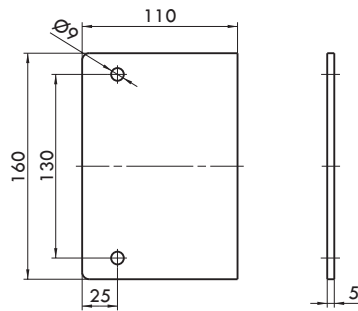
### Lasplaat EP-1

Artikel Nr	Materiaal
FWZ03605-00	Onbehandeld staal



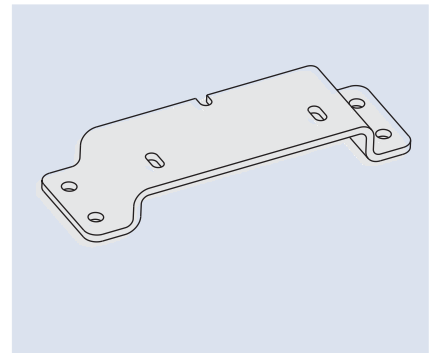
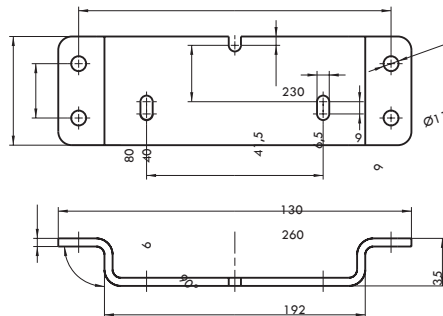
### Bevestigingsplaat plat voor EP-1 pomp

Artikel Nr	Materiaal
0800800263	Geel verzinkt staal



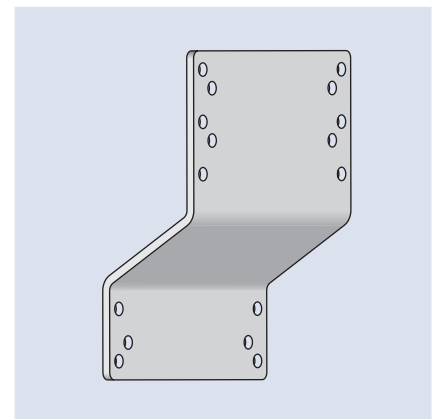
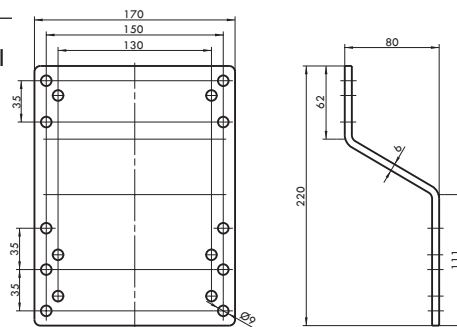
### Bevestigingsplaat voor EP-1 met 1-delige 8kg houder

Artikel Nr	Materiaal
0800800822	Geel verzinkt staal



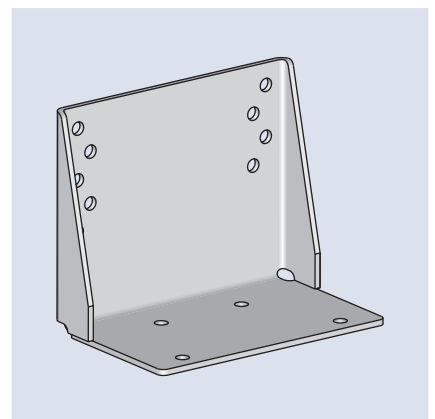
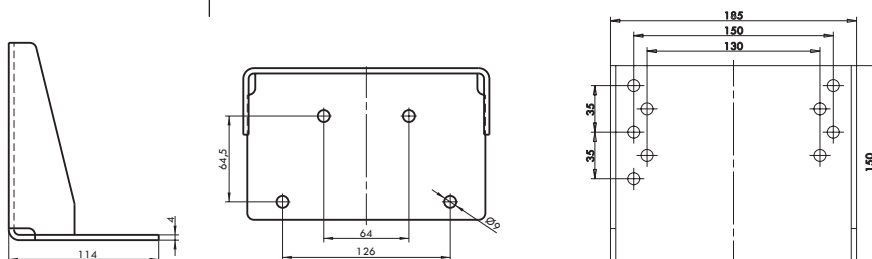
### Bevestigingsplaat gebogen PiCO

Artikel Nr	Materiaal
0800800733	Geel verzinkt staal



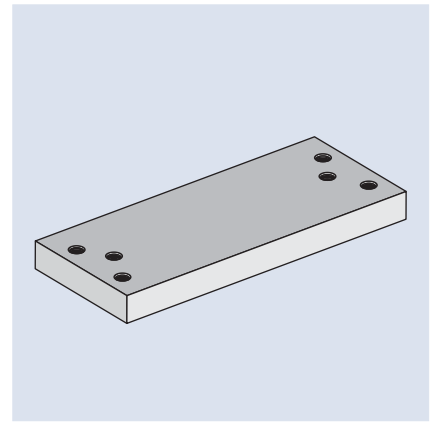
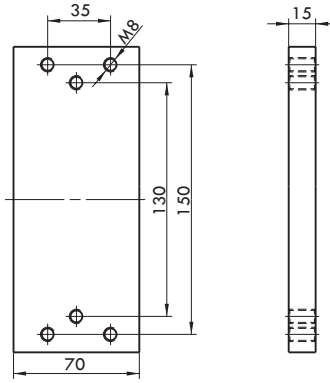
### Console PiCO

Artikel Nr	Materiaal
0800800734	Geel verzinkt staal



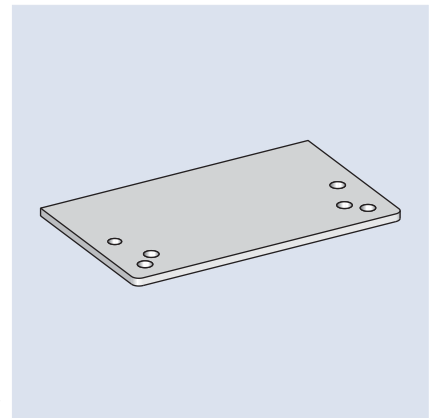
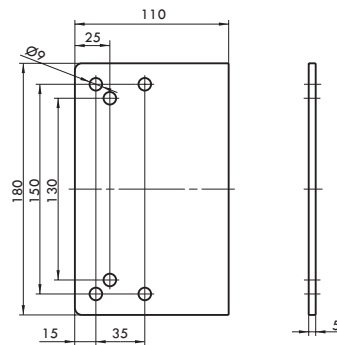
### Lasplaat PiCO

Artikel Nr	Materiaal
F2185/33-00	Onbehandeld staal



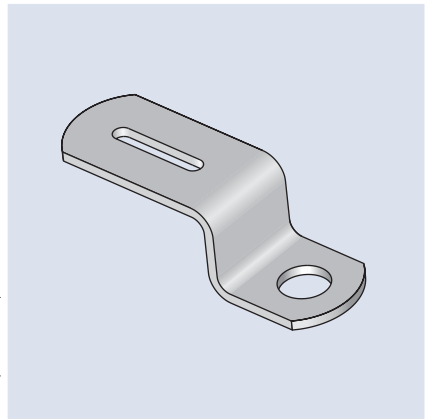
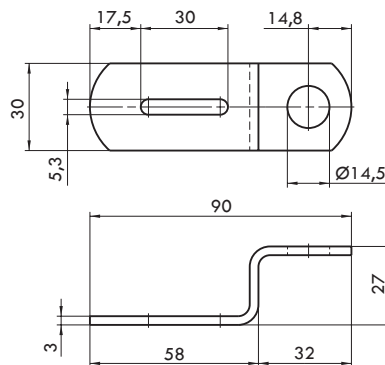
### Bevestigingsplaat voor PiCO pomp

Artikel Nr	Materiaal
0800800732	Geel verzinkt staal



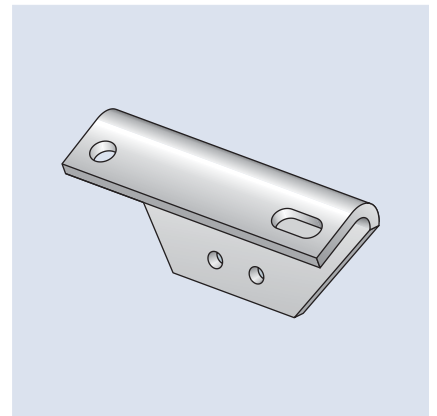
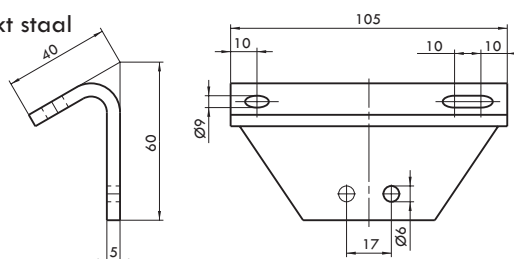
### Bevestigingsplaat voor MX-F verdeler

Artikel Nr	Materiaal
0800800010	Geel verzinkt staal

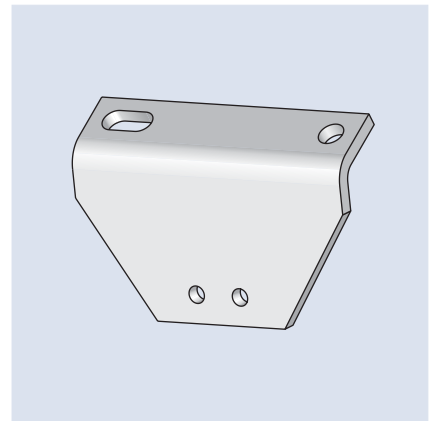
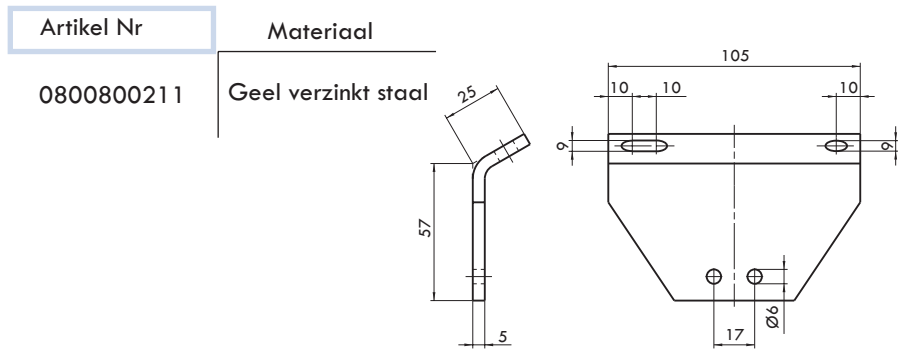


### Bevestigingsplaat voor MX-F verdeler

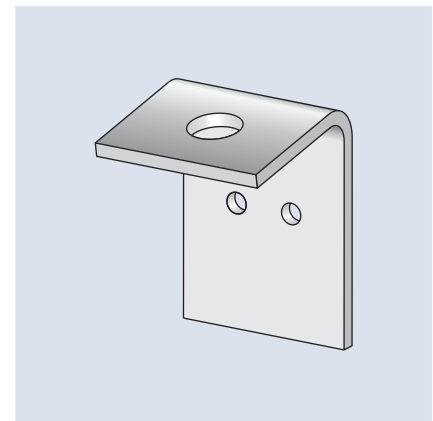
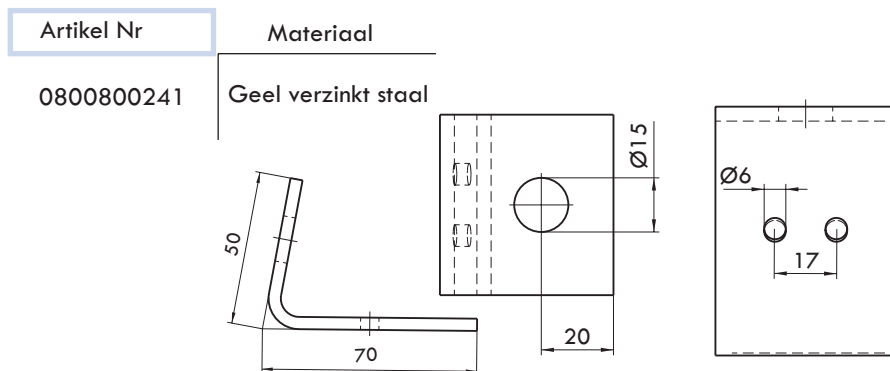
Artikel Nr	Materiaal
0800800210	Geel verzinkt staal



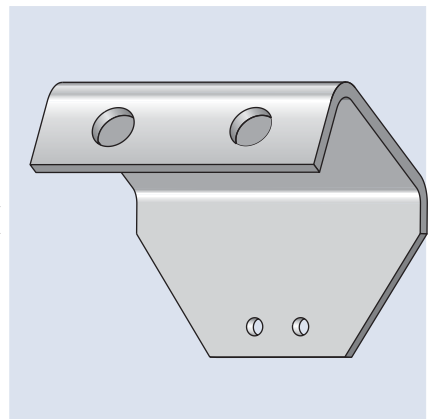
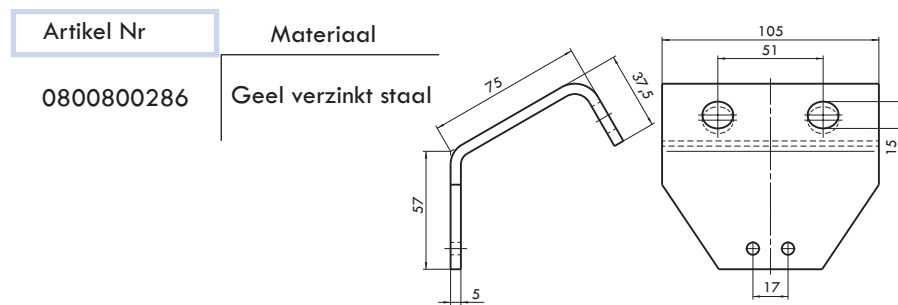
**Bevestigingsplaat voor MX-F verdeler**



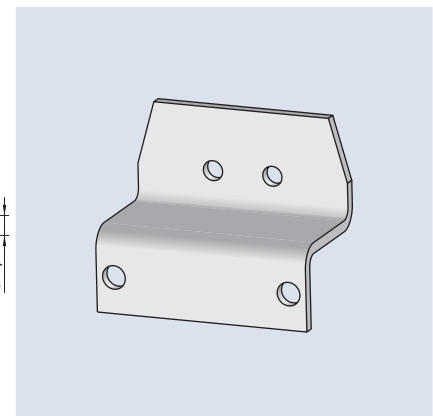
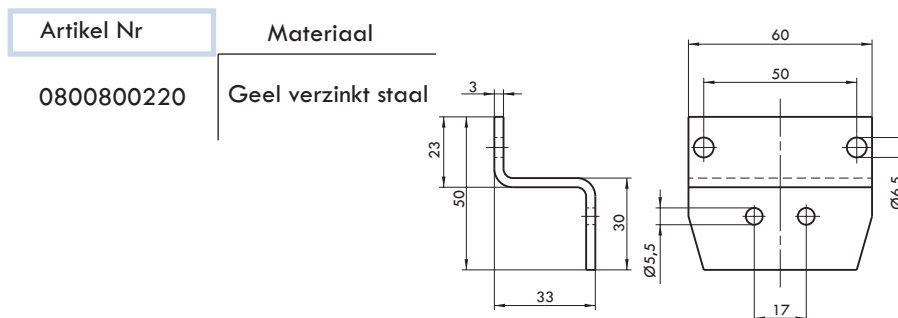
**Bevestigingsplaat voor MX-F verdeler**



**Bevestigingsplaat voor MX-F verdeler**

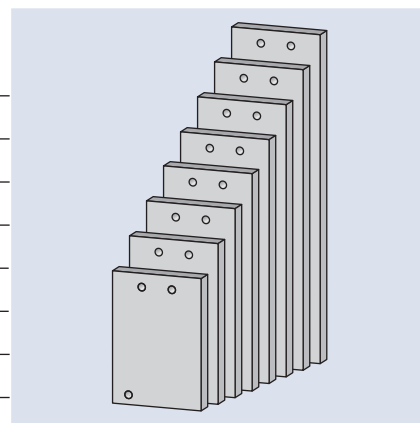


**Bevestigingsplaat voor MX-F verdeler**



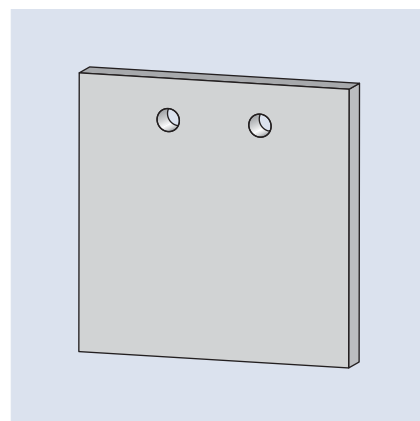
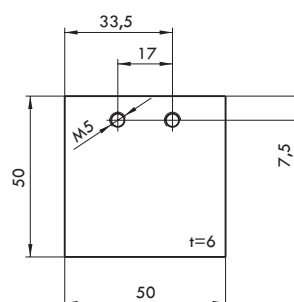
### Lasplaat voor MX-F verdeler

Artikel Nr	Voor. MX-F X/X	A	L	Materiaal
FWZ02259-00 001	3/X	70	57,2	Staal
FWZ02259-00 002	4/X	85	72,0	Staal
FWZ02259-00 003	5/X	100	86,7	Staal
FWZ02259-00 004	6/X	115	101,5	Staal
FWZ02259-00 005	7/X	129	116,2	Staal
FWZ02259-00 006	8/X	144	131	Staal
FWZ02259-00 007	9/X	159	145,7	Staal
FWZ02259-00 008	10/X	174	160,5	Staal



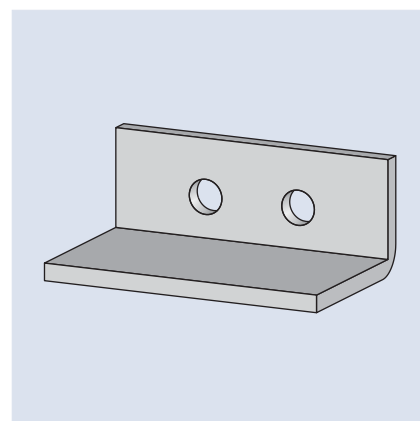
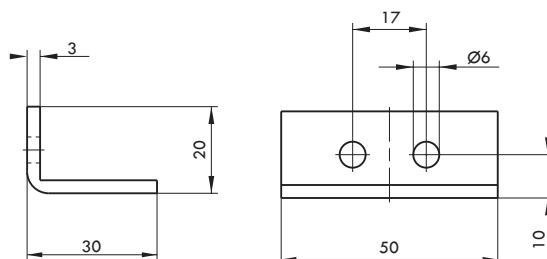
### Korte lasplaat voor MX-F verdeler

Artikel Nr	Materiaal
0800800636	Onbehandeld staal



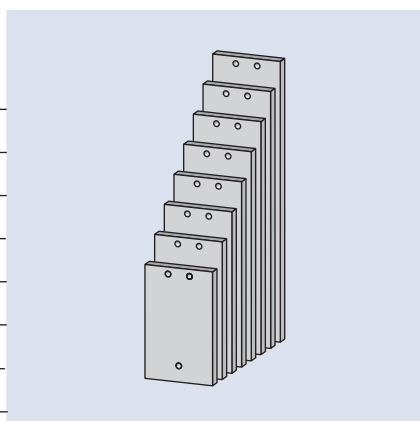
### Lasplaat voor MX-F verdeler

Artikel Nr	Materiaal
0800800571	Onbehandeld staal



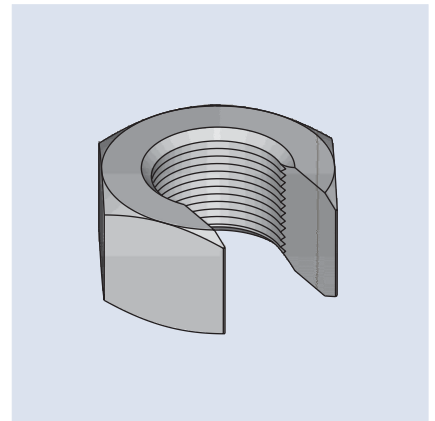
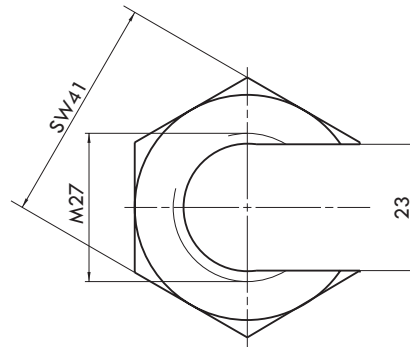
### Lasplaat voor SX-1 verdeler

Artikel Nr	Voor SX-1 X/X	A	B	Materiaal
FWZ02259-02 001	3	94,1	74,1	Staal
FWZ02259-02 002	4	113,8	93,8	Staal
FWZ02259-02 003	5	133,5	113,5	Staal
FWZ02259-02 004	6	153,2	133,2	Staal
FWZ02259-02 005	7	172,9	152,9	Staal
FWZ02259-02 006	8	192,6	172,6	Staal
FWZ02259-02 007	9	212,3	192,3	Staal
FWZ02259-02 008	10	232,0	212,0	Staal



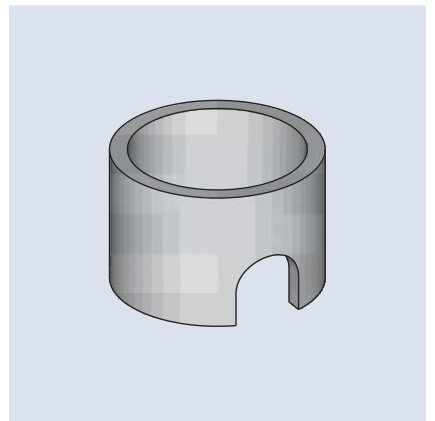
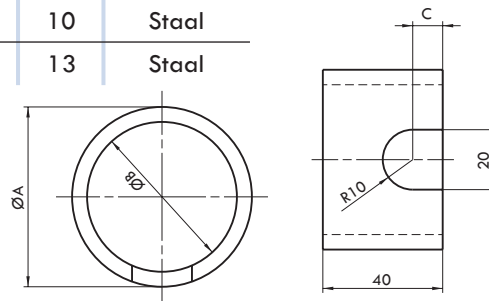
### Lasbout

Artikel Nr	Materiaal
FWZ02617-00	Staal



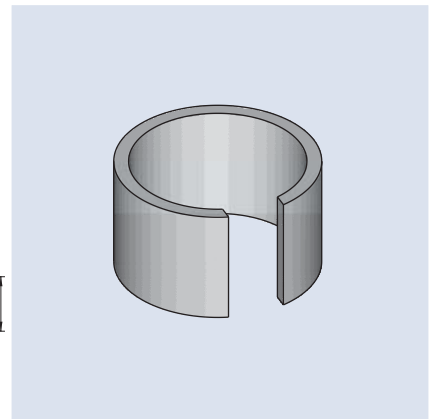
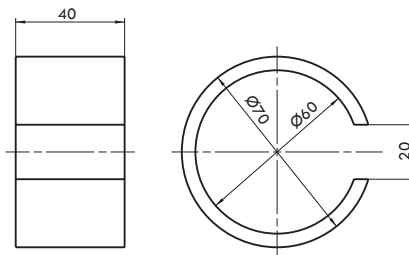
### Lasring

Artikel Nr	ØA	ØB	C	Materiaal
FWZ02902-01	60	50	10	Staal
FWZ02902-02	90	78	13	Staal



### Beschermring voor smeerpunten

Artikel Nr	Materiaal
FWZ02902-00	Staal met grondverf



### Lasstuk voor aansluiting smeerpunten

Artikel Nr	Materiaal
FWZ03326-00	Staal

