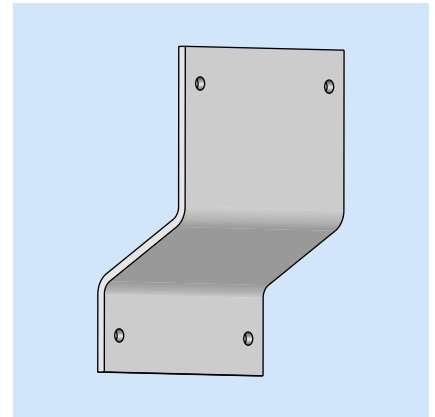
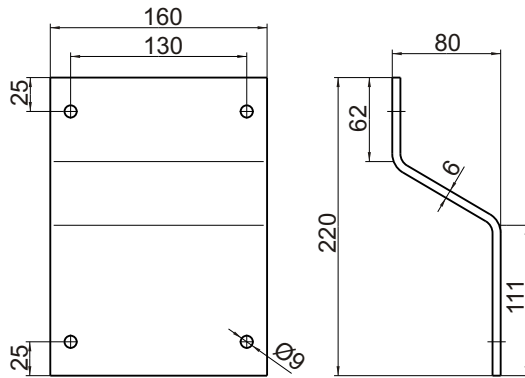


Support courbé EP-1

Dimension:

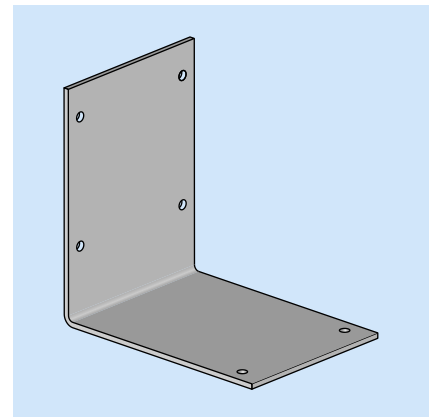
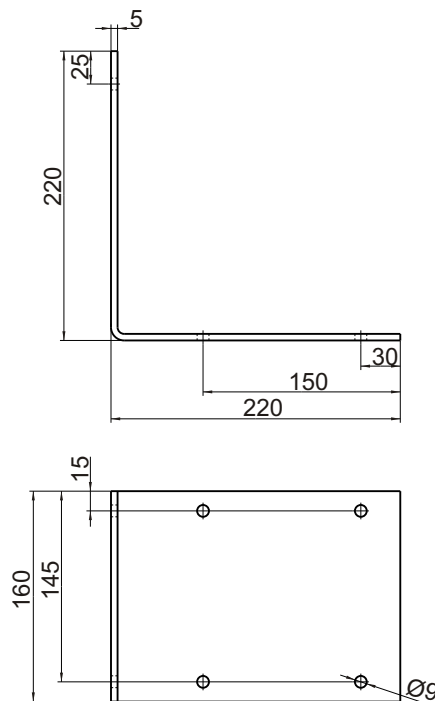


Article-n°	Matériel
0800500100	Acier zingué chromate

Support en forme L

pour EP-1

Dimension:

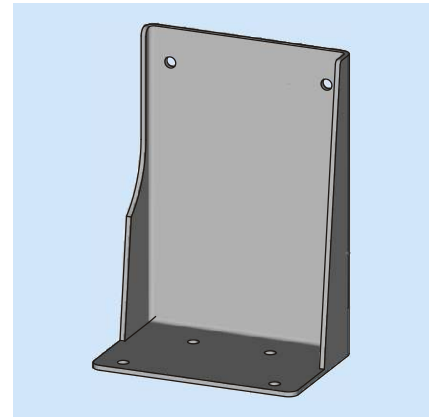
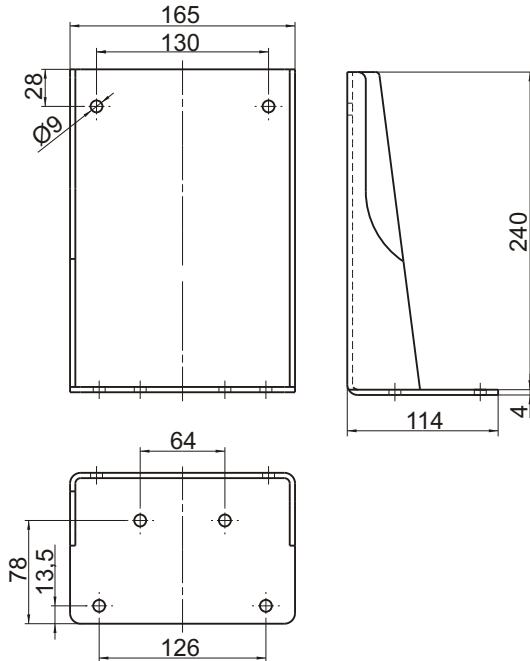


Sauf modifications!

Article-n°	Matériel
0800500101	Acier zingué bichromate

Console EP-1

Dimension:

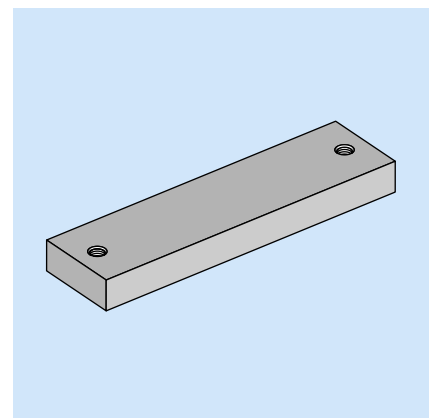
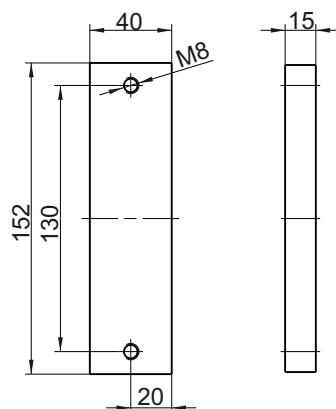


Article-n°	Matériel
0800800445	Acier zingué bichromate

Support

pour EP-1

Dimension:

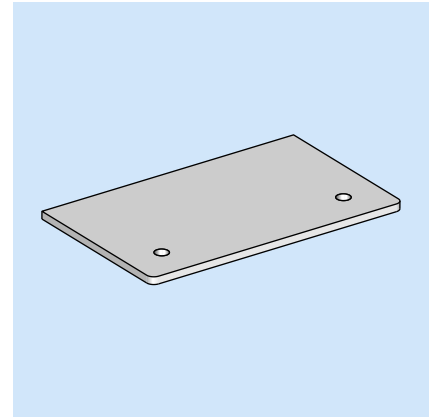
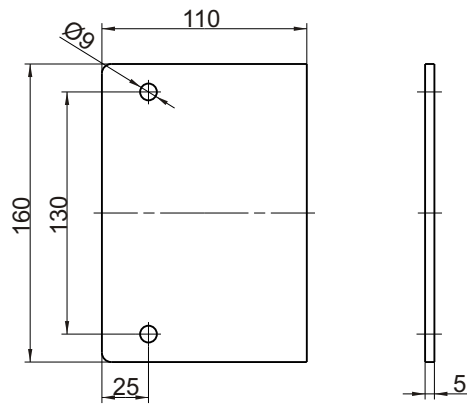


Sauf modifications!

Article-n°	Matériel
FWZ03605-00	Acier non traité

Support plat
pour pompe EP-1

Dimension

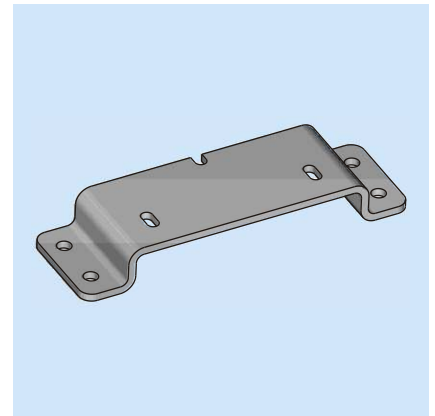
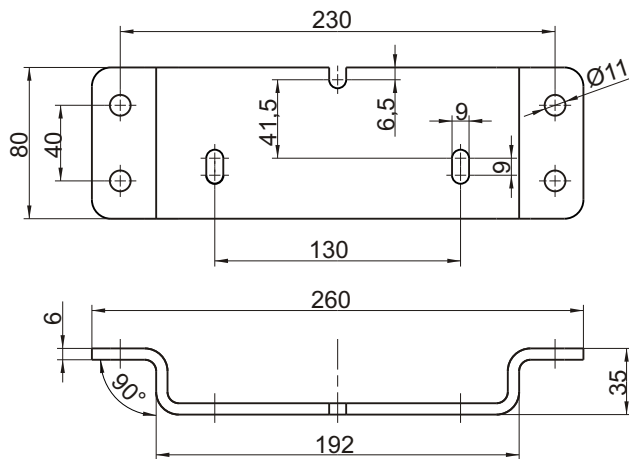


Article-n°	Matériel
0800800263	Acier non traité

Support

pour EP-1 avec réservoir 8 kg en 1 pièce

Dimension



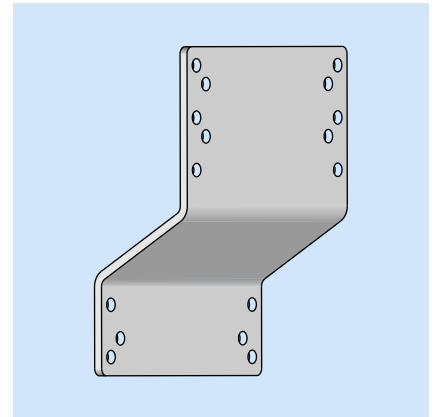
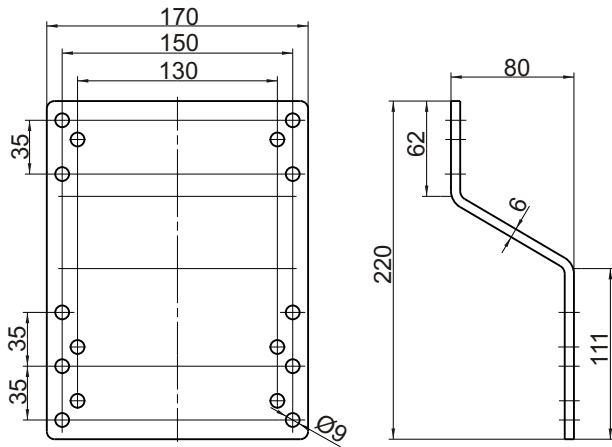
Article-n°	Matériel
0800800822	Acier zingué bichromate

Sauf modifications!



Support courbé PICO

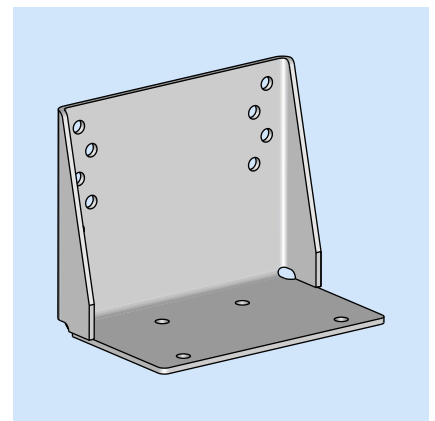
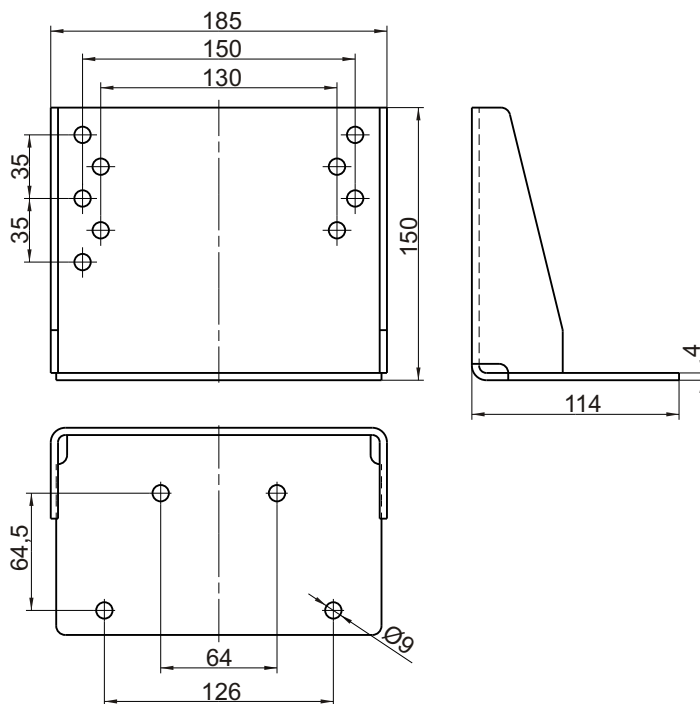
Dimension:



Article-n°	Matériel
0800800733	Acier zingué bichromate

Console PICO

Dimension:

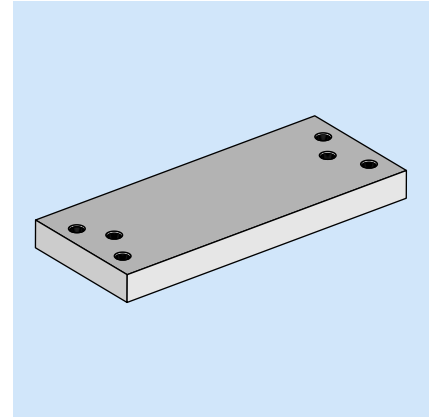
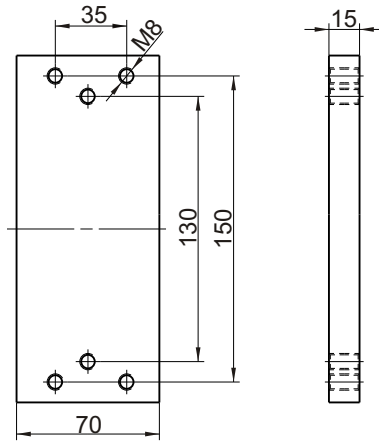


Sauf modifications!

Article-n°	Matériel
0800800734	Acier zingué bichromate

Support à souder PICO

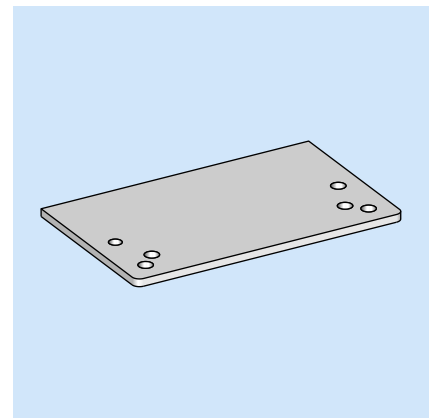
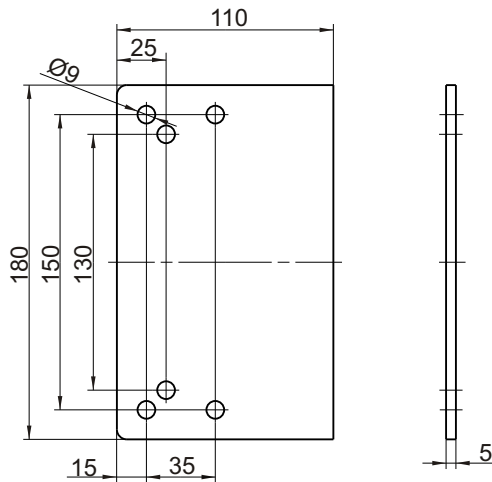
Dimension:



Article-n°	Matériel
F2185/33-00	Acier non traité

Support pour pompe PICO

Dimension:



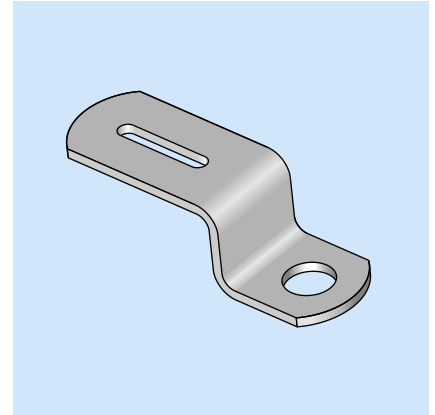
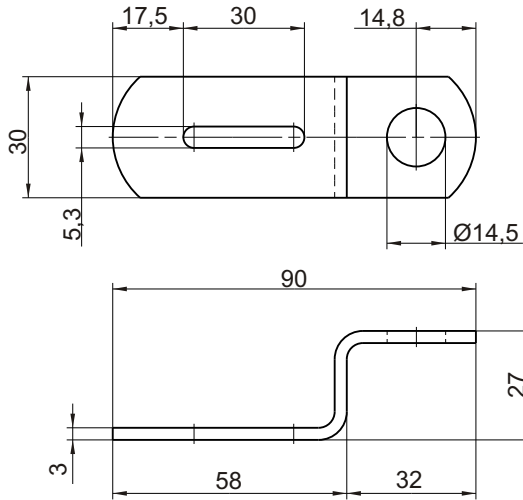
Article-n°	Matériel
0800800732	Acier non traité

Sauf modifications!

Support

pour répartiteur MX-F

Dimension:

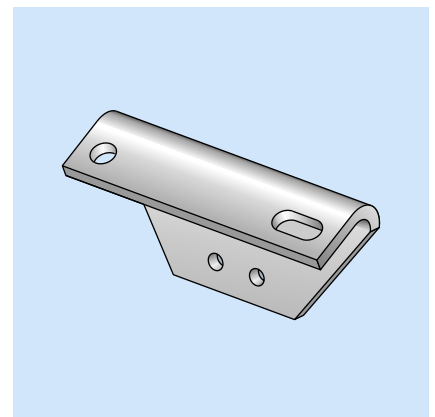
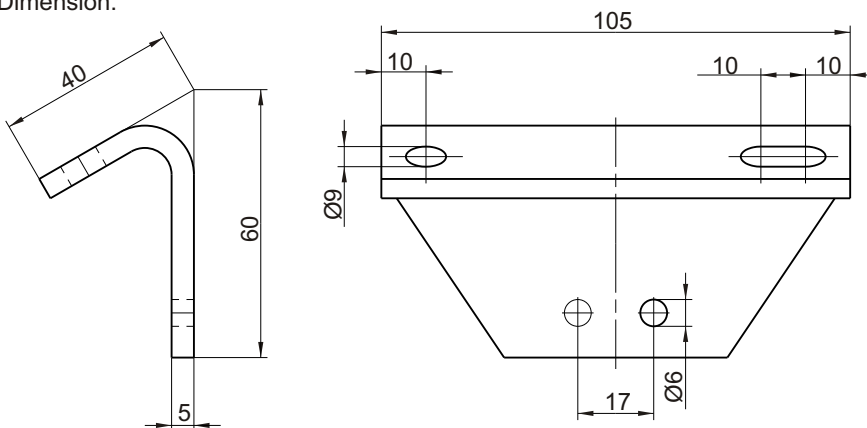


Article-n°	Matériel
0800800010	Acier zingué bichromate

Support

pour répartiteur MX-F

Dimension:



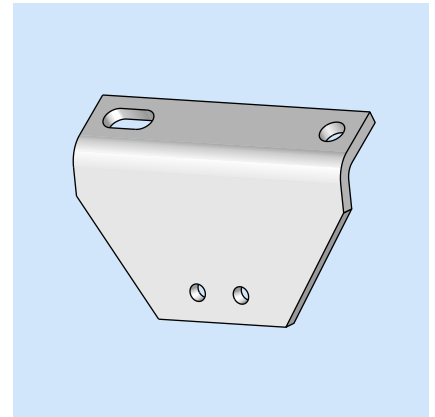
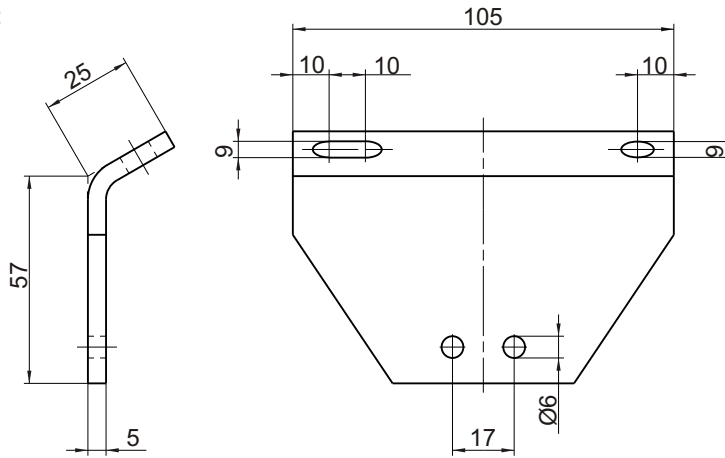
Article-n°	Matériel
0800800210	Acier zingué bichromate

Sauf modifications!

Support

pour répartiteur MX-F

Dimension:

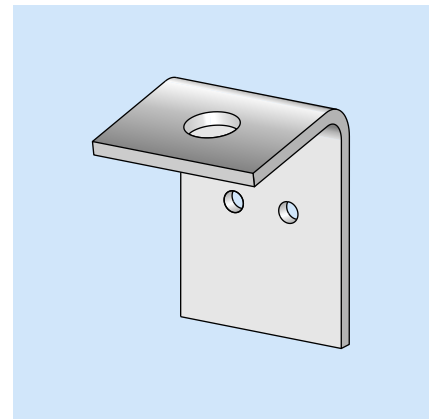
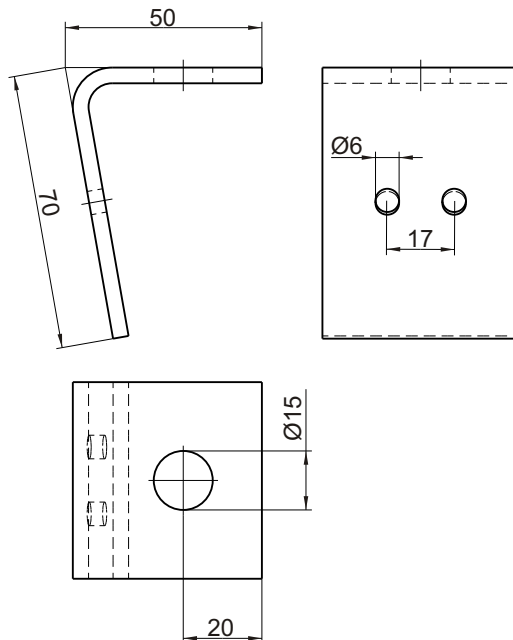


Article-n°	Matériel
0800800211	Acier zingué bichromate

Support

pour répartiteur MX-F

Dimension:

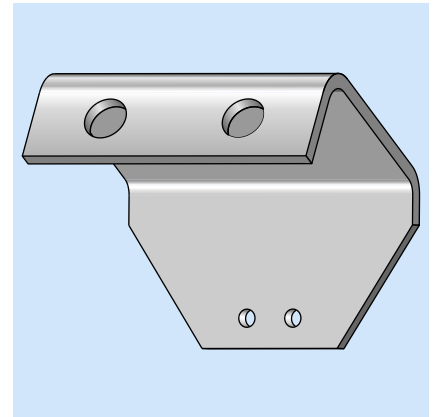
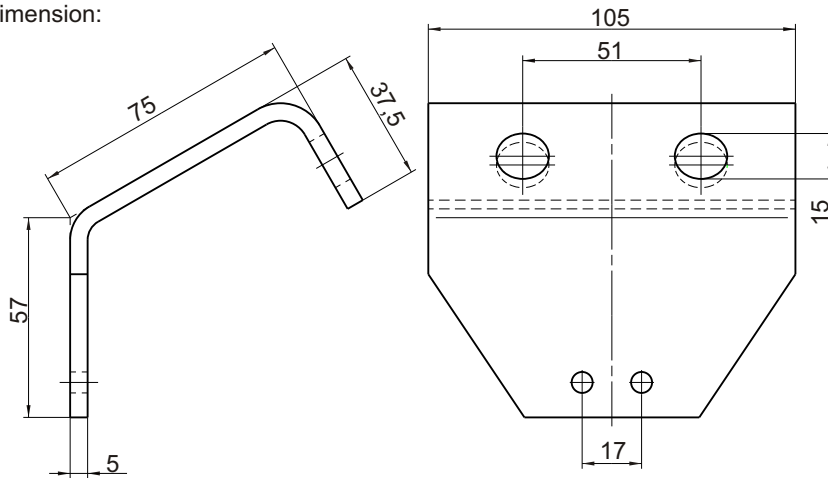


Sauf modifications!

Article-n°	Matériel
0800800241	Acier zingué bichromate

Support pour répartiteur MX-F

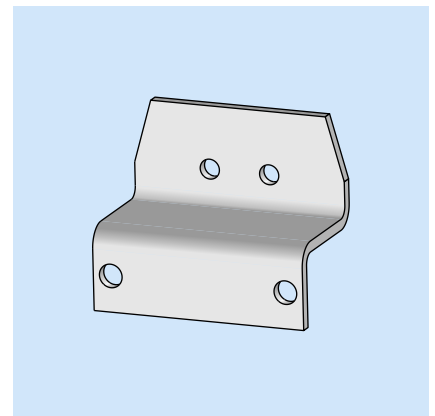
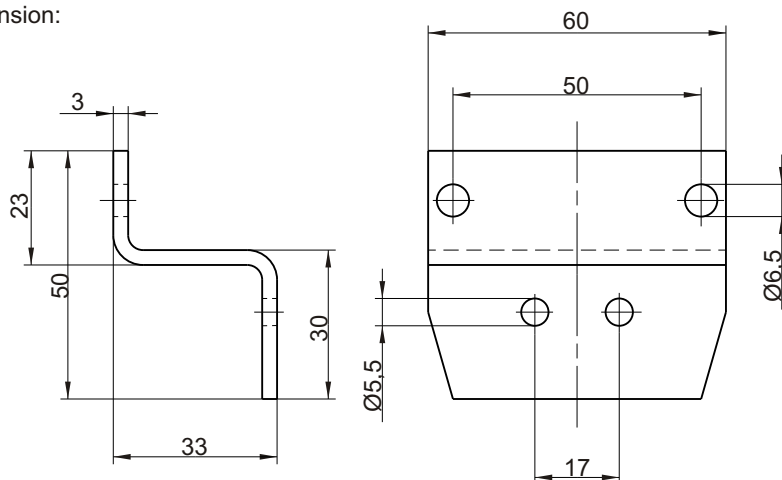
Dimension:



Article-n°	Matériel
0800800286	Acier zingué bichromate

Support pour répartiteur MX-F

Dimension:



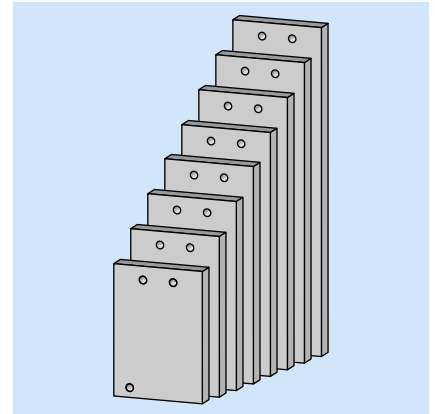
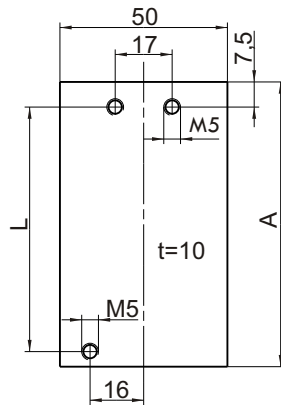
Article-n°	Matériel
0800800220	Acier zingué bichromate

Sauf modifications!

Support à souder

pour répartiteur MX-F

Dimension:

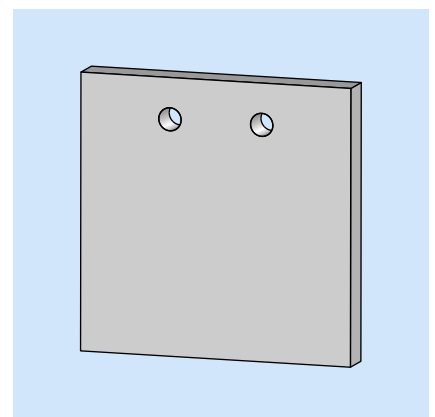
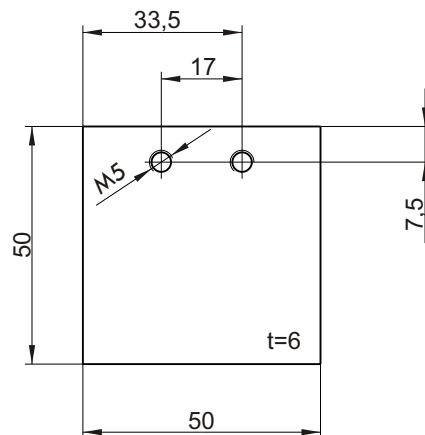


Article-n°	Pour répartiteur MX-F X/X	A	L	Matériel
FWZ02259-00 001	3/X	70	57,2	Acier
FWZ02259-00 002	4/X	85	72,0	Acier
FWZ02259-00 003	5/X	100	86,7	Acier
FWZ02259-00 004	6/X	115	101,5	Acier
FWZ02259-00 005	7/X	129	116,2	Acier
FWZ02259-00 006	8/X	144	131	Acier
FWZ02259-00 007	9/X	159	145,7	Acier
FWZ02259-00 008	10/X	174	160,5	Acier

Support court à souder

pour répartiteur MX-F

Dimension:



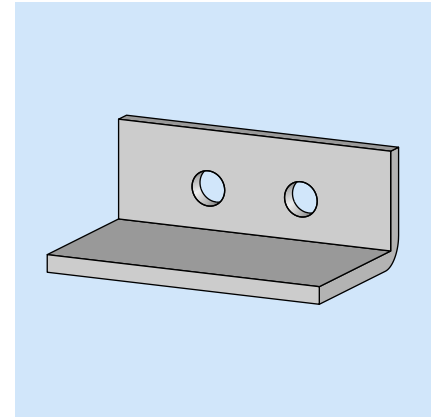
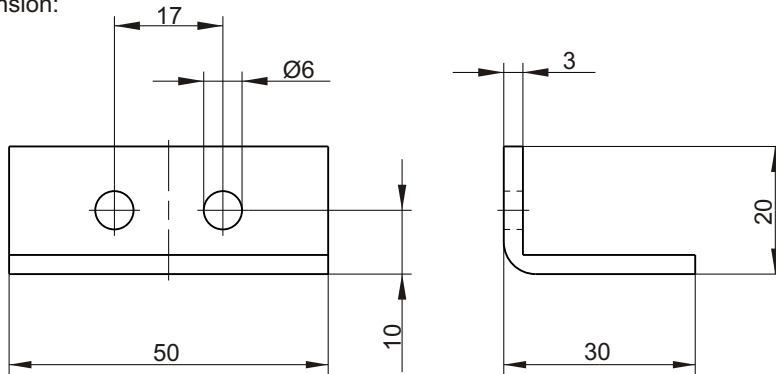
Sauf modifications!

Article-n°	Matériel
0800800636	Acier zingué bichromate

Support à souder

pour répartiteur MX-F

Dimension:

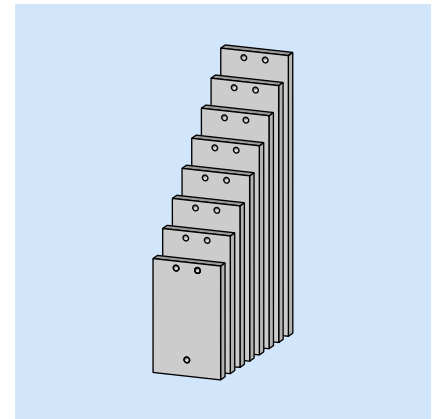
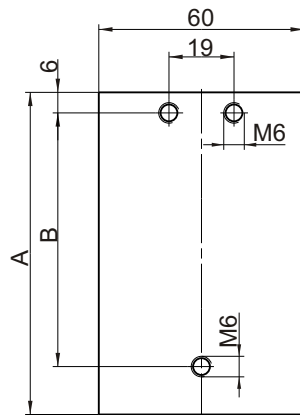


Article-n°	Matériel
0800800571	Acier zingué bichromate

Support à souder

pour répartiteur SX-1

Dimension:

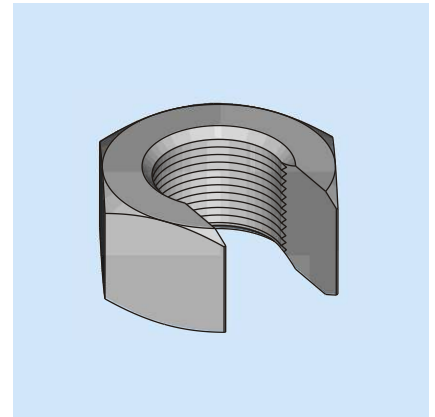
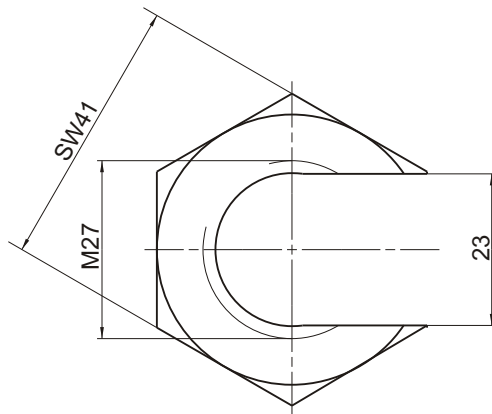


Article-n°	Pour répartiteur SX-1 X/X	A	B	Matériel
FWZ02259-02 001	3	94,1	74,1	Acier
FWZ02259-02 002	4	113,8	93,8	Acier
FWZ02259-02 003	5	133,5	113,5	Acier
FWZ02259-02 004	6	153,2	133,2	Acier
FWZ02259-02 005	7	172,9	152,9	Acier
FWZ02259-02 006	8	192,6	172,6	Acier
FWZ02259-02 007	9	212,3	192,3	Acier
FWZ02259-02 008	10	232,0	212,0	Acier

Sauf modifications!

Ecrou à souder

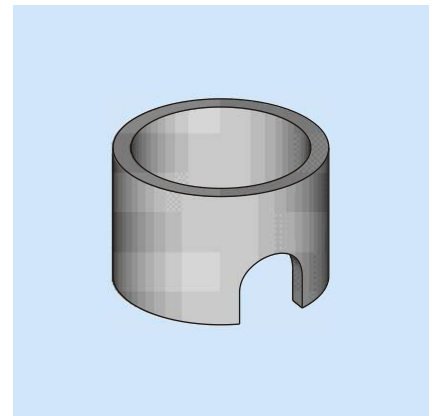
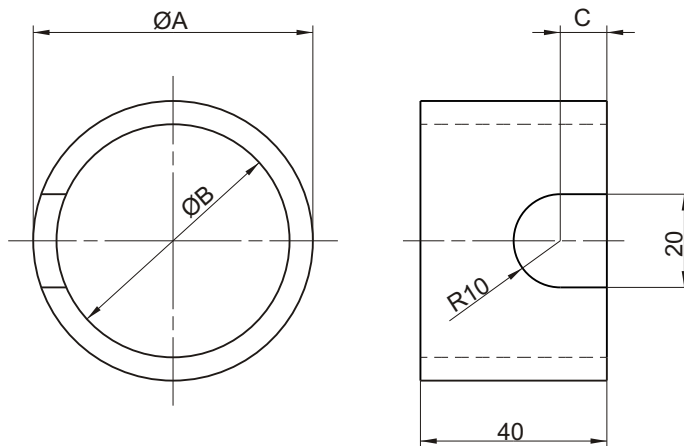
Dimension:



Article-n°	Matériel
FWZ02617-00	Acier

Bague de protection

Dimension:

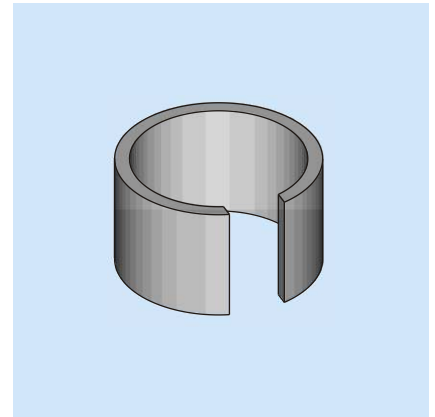
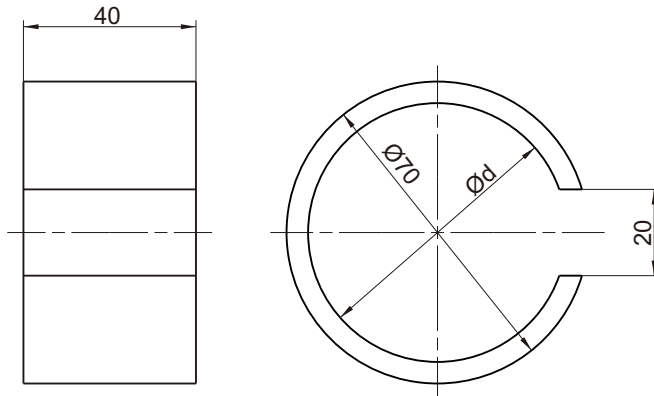


Article-n°	ØA	ØB	C	Matériel
FWZ02902-01	60	50	10	Acier
FWZ02902-02	90	78	13	Acier
0802000595	70	60	10	Acier

Sauf modifications!

Protection pour points de graissage

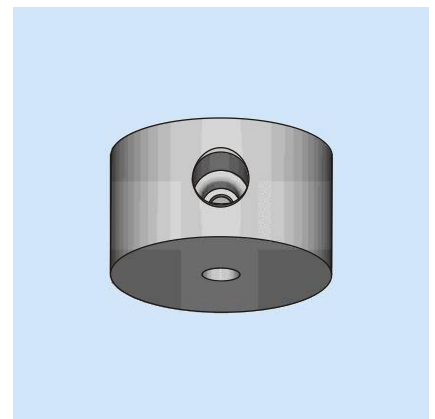
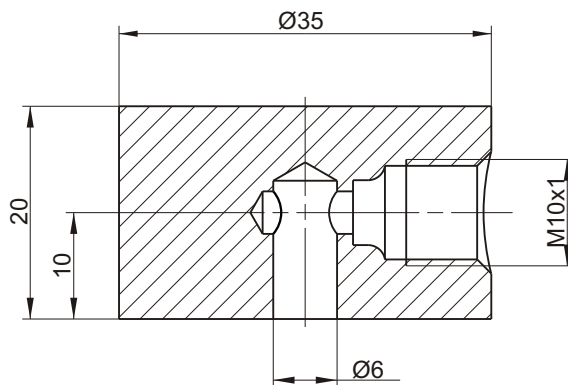
Dimension:



Article-n°	Ø d	Matériel
FWZ02902-00	60	Acier peinture de fond
FWZ02902-06	50	Acier sans couche

Pièce à souder pour raccordement points de graissage

Dimension:

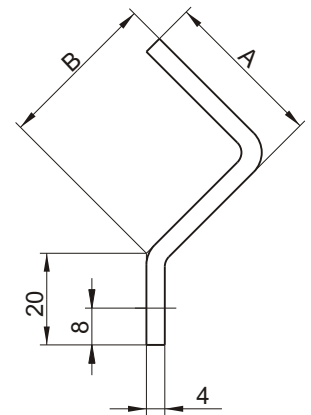
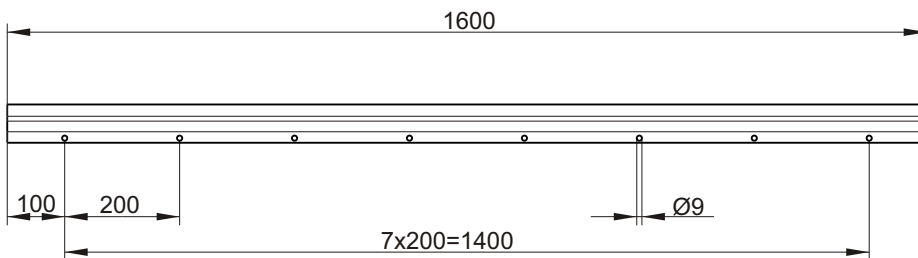
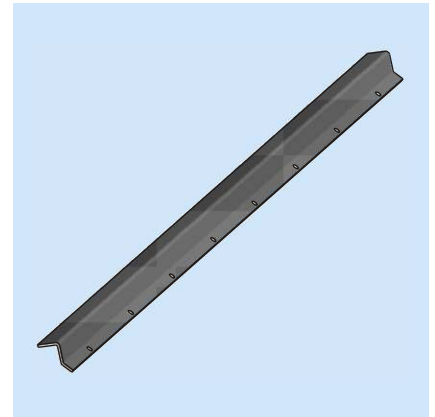


Article-n°	Matériel
FWZ03326-00	Acier

Sauf modifications!

Protection flexible

Dimension:



Article-n°	A	B	Matériel
0800800628	35	35	Acier

Toutes les pièces en acier sont zingués et bichromates.

Sauf modifications!